

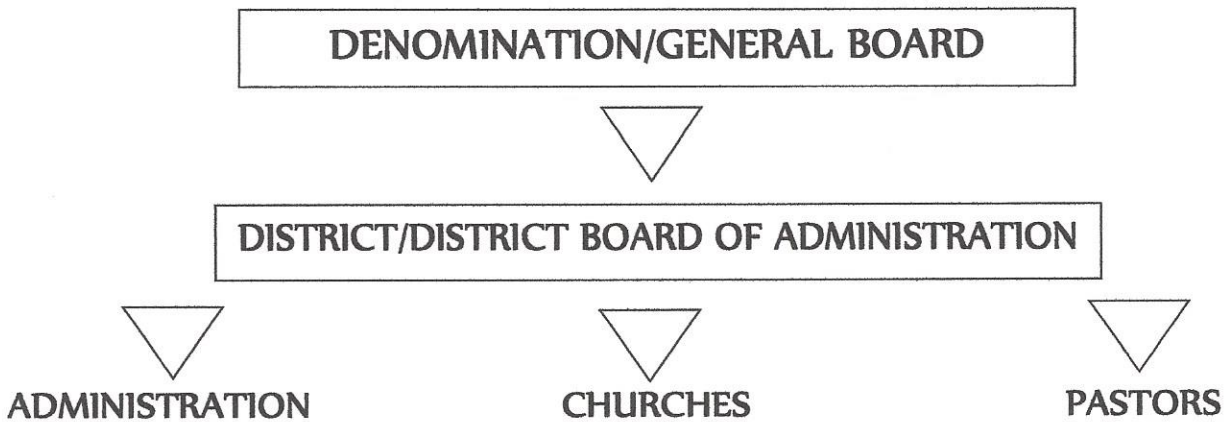
NORTH MICHIGAN DISTRICT OF THE WESLEYAN CHURCH

NMD Vision: *Transforming people through Christ. Empowering an expanding number of churches to be missionally healthy, to passionately transform diverse cultures for Christ.*

NMD Mission: *Exists to equip, enrich, administrate and communicate to pastors and laity in 1 redemptive ways to accomplish the Great Commission*

The district and denomination exist for the purpose of having healthy pastors and laity which make healthy churches of The Wesleyan Church

FLOW CHART



Positions, Boards, Committees and Teams

ADMINISTRATION

- Auditor
- Board of Review
- District Conference
 - Conference Planning Team
 - Conference Stenographer
 - Nominating Committee
 - Statistician
- District Office
 - Admin Assistants
 - Building Committee
 - Records/History
 - Reporting
 - Website
- Insurance Committee
- Finance Committee
 - Churchill Endowment Fund
 - Treasurer
- WPWC&CC Board

CHURCHES

- Assessment Tools
 - Grip Birkman
- Church Multiplication
 - Coaching
 - Global Partners
- Spiritual Formation
 - IMPACTS Team
- Children's Ministry
 - Kid's Camp
- Couples Retreat
- Men's Retreat
- Youth/Students
 - Camp 180
 - Youth Cabinet
- Women Ministry
 - IVY
 - Women's Retreat
- WP Family Camp
- Lighthouse Leadership Events

PASTORS

- DBMD
 - Council of Ordination
 - Pre-Ordination
 - Post-Ordination
 - Hispanic
- REAIM
- RESOURCES
 - Counselors
 - Leadership Investment –
 - Lead On – Lead Up